

WILLOWBROOK PRIMARY SCHOOL

Rosen Crescent, Hutton, Brentwood, Essex CM13 2TU

Headteacher: Mrs C Branton, Headteacher: B.Ed. (Hons), NPQH/NPQEL.

Telephone: 01277 214662 Fax: 01277 200436

Website: www.willowbrook.essex.sch.uk E-mail: admin@willowbrook.essex.sch.uk



Dear Parents, Carers of Willowbrook Primary School

We are your Representatives on the Parent Council this academic year.

Our names are;

Willowbrook Parent Councillors



EYFS (Maple) Representative



Miss Clarke

maple.parentcouncil@willowbrook.essex.sch.uk

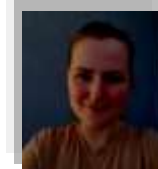
Year 1 (Holly) Representative



Ms Humphreys

holly.parentcouncil@willowbrook.essex.sch.uk

Year 2 (Elm) Representatives



Mrs Williams

elm.parentcouncil@willowbrook.essex.sch.uk



Mr Chinniah

Year 3 (Beech) Representative



Mrs Brown

beech.parentcouncil@willowbrook.essex.sch.uk

Year 4 (Whitebeam) Representatives



Mrs Walmsley

whitebeam.parentcouncil@willowbrook.essex.sch.uk



Mrs Elliott

Our Core Values: **INDEPENDENCE** - HAPPINESS – **TEAM WORK** - CARING - **RESPECT** – HONESTY



Year 5 (Chestnut) Representative



Mrs Brown

[\(chestnut.parentcouncil@willowbrook.essex.sch.uk\)](mailto:chestnut.parentcouncil@willowbrook.essex.sch.uk)

Year 6 (Pine) Representative



Mrs Bradley

[\(pine.parentcouncil@willowbrook.essex.sch.uk\)](mailto:pine.parentcouncil@willowbrook.essex.sch.uk)

Our Parent Council will meet every term to represent your views on matters of policy relating to you and your child. School policies can be found on our website under 'information'.

We are keen that you should be able to share your views with us on school matters; including, how we can improve communication; integrate your ideas for improvements and ensure the best outcomes for your children.

You can contact us by:

- e-mail: using the email address below each picture
- posting comments for improvements in the Parent Council post box outside the office (slips will be available outside the school office)
- sharing views at the school gate

If however you have a concern or complaint, please can we ask that you use the correct channels of communication; Class Teacher first, then Key Stage Leaders, Deputy Head and Headteacher.

Yours sincerely
Parent Council